



Lot 25 Dairy Creek Road, Waterford QLD

4 2 2

House & Land Package

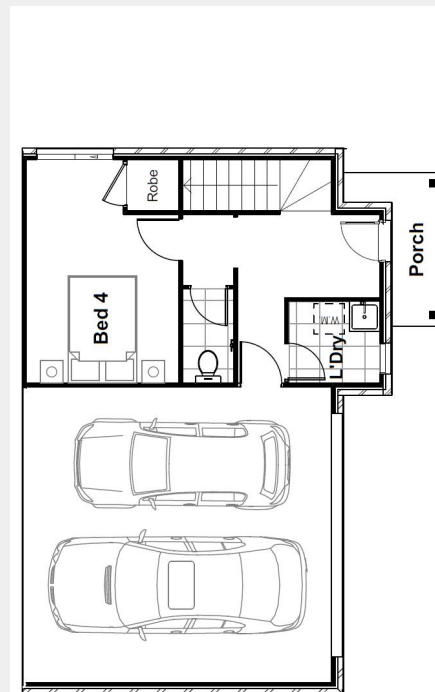
\$613,354

Inclusions

- Impressions Bonus
- Essence Façade included
- All Council fees and applications.
- 1250mm site cut
- 2550mm Ceilings to Lower and Upper Levels
- Overhead fans to all bedrooms. 1 added to Alfresco.
- 40mm Stone to kitchen island with 40mm waterfall end
- All robes are MIRROR sliders
- Flyscreens to all of home including sliding doors
- H1 Slab including Alfresco & Porch
- 30 lm of peering [just in case]
- Front door 1200mm
- Laundry – 20mm stone bench top – drop in black/chrome sink – 1000mm overhead cupboard with bulk head
- 280 litre Heat Pump Upgrade
- Parador Urban 8mm Laminate to home
- Driveway – Kerb Cut
- Render Letter box
- Fold Down Cloths line
- Turf to Front Yard
- Whirlybird for roof to lower cooling bills
- One 7.1KW and one 2.5KW Split System Air

TOTAL FLOOR AREA: 220M²

LOT AREA: 941M²



Disclaimer: Illustration and plans represented on this brochure are for illustration purposes and are to be used as a guide only. Specific details, dimensions, design colours and finishes are included in the contract documents. This work is copyright and cannot be reproduced or copied in any form without written consent of the builder.