



Lot 3 Wegener Street, Ipswich QLD

4 2 2

House & Land Package

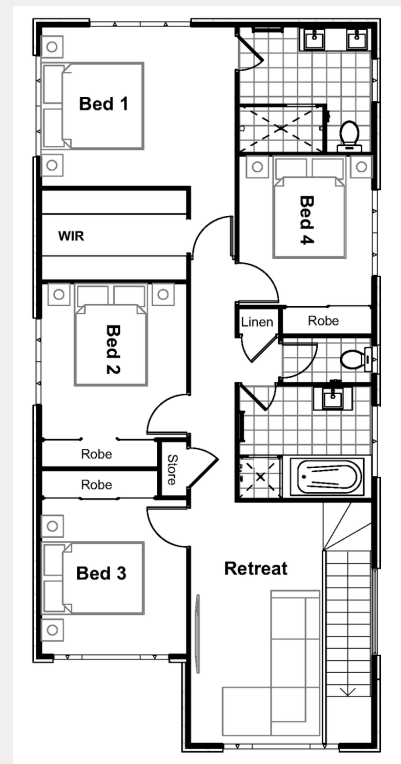
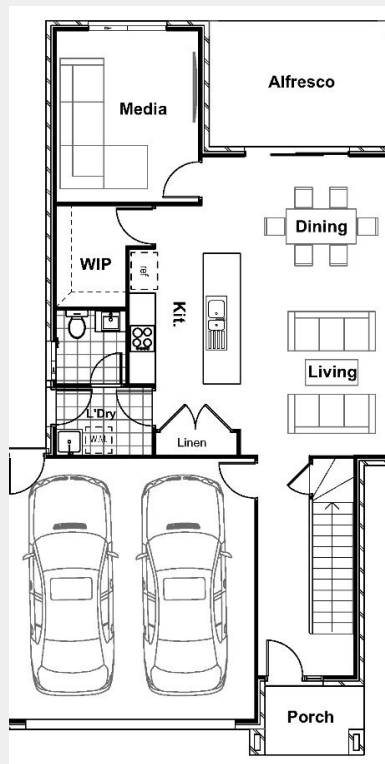
\$532,000

Inclusions

- Impressions Bonus
- Essence Facade included
- All Council fees and applications.
- 500mm site cut
- 2570mm Ceilings to home
- Overhead fans to all bedrooms
- 40mm Stone to kitchen island with 40mm waterfall end
- Pots draws to kitchen [improve look and function]
- Water Tap plumbing to fridge
- Fly screens to all of home including sliding doors
- Zero Lot Boundary included in quote
- H1 Slab including Alfresco & Porch
- Dishwasher added
- Laundry – 20mm stone bench top – drop in black/chrome sink – 1000mm overhead cupboard with bulk head
- 2.5KW & 7.1KW split system to home
- Tiles to External Porch & Alfresco
- Upgraded Opal Carpet to remainder of home
- Exposed Aggregate Driveway – Kerb Cut – Footpath cut and repair
- Render Letter box
- Fold Down Cloths line
- 50mm topsoil & Wintergreen turf to all of the yard

TOTAL FLOOR AREA: 240M²

LOT AREA: 690M²



Disclaimer: Illustration and plans represented on this brochure are for illustration purposes and are to be used as a guide only. Specific details, dimensions, design colours and finishes are included in the contract documents. This work is copyright and cannot be reproduced or copied in any form without written consent of the builder.