



Address Available Upon Request, Eight Miles Plains QLD

5 3 2

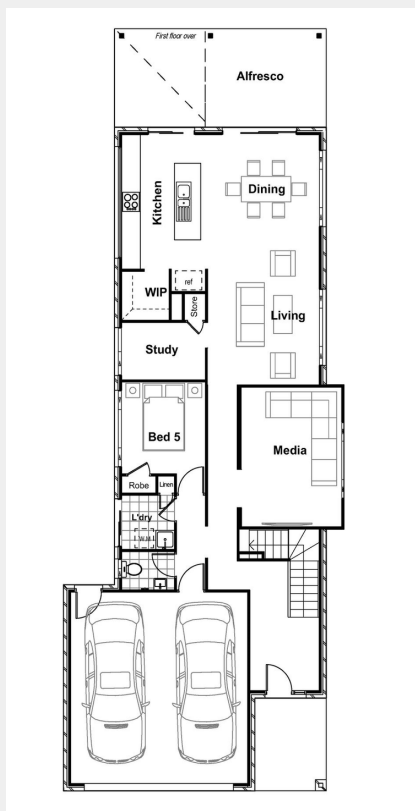
## House & Land Package

\$951,868

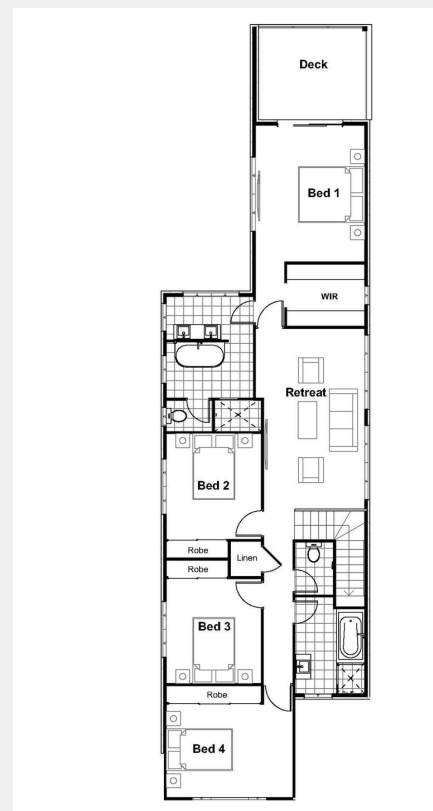
### Inclusions

- Hamptons Style Façade Included
- 16KW Ducted A/C including MyAir and MyPlace
- Impressions Range Inclusions Package
- 40mm Stone Bench Tops to Kitchen inc. Waterfall ends
- 900mm Wide Smeg Cooking Appliances plus Microwave and Dishwasher
- Gareth Ashton 3K2 Tapware in Black or Chrome
- Blanco undermount sink (Black/White/Rock Grey)
- Fully Laminated base and overhead cupboards including soft close drawers to kitchen
- 20mm Stone Vanity Tops
- Gareth Ashton Tapware in Black or Chrome
- 1590mm Freestanding Bath with Freestanding floor Mixer
- 900mm Base Cabinetry to Laundry including 20mm Stone Top and Drop in Tub
- LED Downlights
- Ceiling Fans to all bedrooms
- Vic ash Timber Stairs
- External Tiles to Porch and Alfresco
- Porcelain Tiles to main floors and Carpet to Media and Bedrooms
- Site Cost Allowance up to H1 Soil Type Included
- Driveway/Fencing/Landscaping Allowance Included

TOTAL FLOOR AREA: 306M2



LOT AREA: 400M2



Disclaimer: Illustration and plans represented on this brochure are for illustration purposes and are to be used as a guide only. Specific details, dimensions, design colours and finishes are included in the contract documents. This work is copyright and cannot be reproduced or copied in any form without written consent of the builder.